

Sanctuary

THE SOURCEBOOK FOR INSPIRING BATHROOM DESIGN



HOMES
& GARDENS

IN PARTNERSHIP WITH C.P. HART

matki

EauZone Gold Mesh Glass in Brushed Brass with Universal Linear Shower Tray

Beautifully engineered in the UK



Shower Controls, Deluge and Hand Shower supplied by Swadling Brassware

FOR A BROCHURE AND NEAREST BATHROOM SPECIALIST CALL 01454 328 811 | WWW.MATKI.CO.UK | MATKI PLC, BRISTOL BS37 5PL

CONTENTS



THE EDIT

- 5** From taps to baths to home steam rooms: our pick of inspiring pieces to create your perfect space

LEADING TRENDS

- 10** THE MATERIAL: WOOD A natural choice for beauty and warmth
- 13** THE DETAIL: TEXTURE Adding pleasing touches with tactile finishes
- 14** THE SHAPE: CURVES Rounded forms for softness and a flowing feel
- 16** THE FOCUS: SHOWERING Boosting the therapeutic qualities of water

MEET THE DESIGNERS

- 18** CHARU GANDHI How to create a luxurious spa-style retreat
- 21** BRADLEY VAN DER STRAETEN Good design with wellbeing in mind
- 22** KAREN HOWES Advice on how to ensure a calming atmosphere
- 24** EVA SONAIKE Exciting ways to use colour and pattern in your bathroom

CASE STUDIES

- 28** PRETTY IN PINK Delicate hues are at the heart of this tranquil en suite
- 30** CONFIDENCE TRICK A striking design in modern monochrome
- 32** SERENE SANCTUARY Beauty flows throughout this personalised space
- 34** GLAMOUR REDEFINED Art deco is the star of this stunning scheme

Editorial Director Sarah Spiteri **Global Editor in Chief** Lucy Searle **Group Creative Director** Emma Williams
Group Chief Sub-editor Jennifer Spaeth **Words** Amelia Thorpe **Art Editors** Meredith Davies and Elizabeth Chung
Sub-editors Andrea Johnson and Anne Esden **Editorial Production Manager** Nicola Tillman
Managing Director of Homes Jason Orme **Commercial Director** Rob Biagioni **International & Luxury Account Director** Carole Bunce

OCTOBER 2021 Published by Future PLC, 161 Marsh Wall, London E14 9AP. Printed by Walstead UK Limited.
Distributed by Marketforce (UK) Ltd, 3rd floor, 161 Marsh Wall, London E14 9AP. ©Future PLC 2021

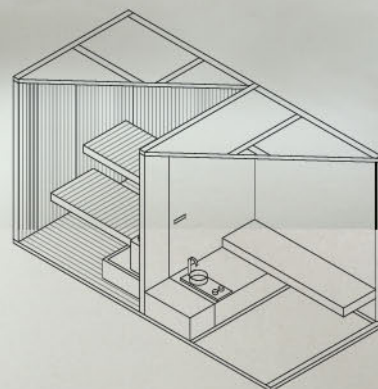
BodyLove

SAUNA + HAMMAM + SHOWER



Love for ourselves.
Love for our body.
With BodyLove, our senses become
the centre of attention: the fragrance
of the wood takes on the quality
of a taste and the materials caress
the skin, while your gaze falls on the
surfaces with their rich natural colours.

Design:
Rodolfo Dordoni
Michele Angelini



effe

PERFECT WELLNESS
BY EFFEGIBI

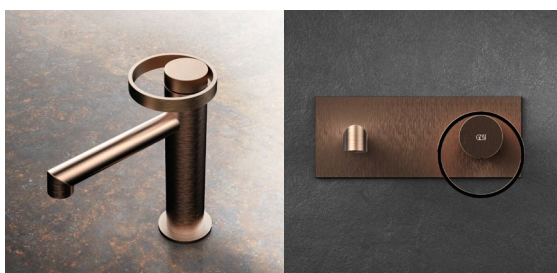
www.effe.it

The Edit



FLATTERING LIGHT

With a Matt Black finish and frosted glass globe, these Astro Sagara wall lights, £98.76 each, C.P. Hart, make a chic addition to any bathroom. Fixed on both sides of a mirror, they will cast an even illumination across your face for applying make-up or shaving, making them a practical feature, too.



BOLD AS BRASSWARE

A jewellery-like ring distinguishes the handles of the Anello tap collection, available in more than a dozen finishes, from Italian designer brand Gessi. Basin mixer, from £643; wall-mounted basin mixer, £1,195, both in Brushed Copper, C.P. Hart.



HERO COLLECTION

Inspired by the sculptural silhouette of a tulip in bloom, the White Tulip collection for Duravit is the latest creation of one of the world's most famous designers, Philippe Starck. This complete bathroom range includes the freestanding oval bath, from £3,714; and freestanding single-lever bath mixer, £1,361, C.P. Hart. →



COOL CURVES

Leading brands are introducing interesting shapes to add decorative flair to the bathroom, and this new collection by the trend-focused Italian company Ex.t is a case in point. Nouveau is a range of washbasins, cabinets, mirrors and accessories freely inspired by early 20th-century art deco design. Shown here are the Round 1 mirror, from £463.19; and asymmetrical countertop basins in Blush Pink, £832 each, C.P. Hart.



INNOVATION ON TAP

Created by design luminaries Edward Barber and Jay Osgerby, the Axor One basin mixer Select 170 in Matt Black features a pleasingly tactile, slender spout and an ingenious innovation: simply press down the all-in-one lever to start or stop the flow of water and swivel clockwise to increase the temperature. It costs £731, C.P. Hart.



FULL FLOW

The minimalist O3 shower head by C.P. Hart features three rain-flow aerated sprays in the centre of its cylinder, attached to the wall with a modern L-shaped fixing. Also available in waterfall jet and laminar flow versions. From £829, C.P. Hart.



CONTEMPORARY COMBINATION

Imaginative colours and statement materials bring life to the clean-lined, modern Cubik furniture collection by Ideagroup. This matt Noce Moscata lacquered basin vanity and tall unit configuration features aluminium frames and dramatic sections of etched glass, £9,890, C.P. Hart.



ULTIMATE INVESTMENT

With a sauna, shower and hammam steam room in one 444cm-wide unit, the Effegibi Yoku spa is designed as a luxurious home wellness centre. It is made from heat-treated aspen with glass fronts, and features a Calacatta Gold Extra porcelain shower and hammam interior. Also available in bespoke sizes. From £50,716, C.P. Hart. →



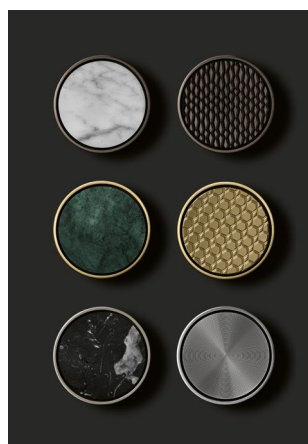
BRAND TO LOVE

Founded in Florence in 1962, Artelinea continues to design and make highly covetable bathroom furniture, basins and mirrors in Tuscany. Original and design-led, its pieces are sure to add flair to a modern space. This Fusion vanity cabinet in Bianco fluted glass with Fumo glass top and a solid surface basin costs £3,701; Riflessi mirror, £871, C.P. Hart.



ON THE PULSE

With its unique nozzle ring formation, the Hansgrohe Pulsify 260 2jet overhead shower with wall connector in Matt Black, £800, C.P. Hart, delivers a spa-like experience. Simply push the select button to switch between microfine and intense PowderRain sprays, and adjust the angle of the head.



WELL HANDLED

Boosting the choice for an individual look, Dornbracht's CYO controls are available with interchangeable handle inserts in Bianco Carrara, Verde Guatemala and Nero Marquina stone, and Wave, Diamond and Circle textured finishes. From £267.84, C.P. Hart.



THE JOY OF COLOUR

Known for its trendsetting designs, Italian company Ceramica Cielo has launched a fresh palette of glossy colours, inspired by nature. Its Acque di Cielo collection includes the Catino Tondo basin stand in (from left) Oltremare, Smeraldo, Alga, Corallo, Ninfea and Anemone ceramic, with matching shelf and painted steel frame, £2,183 each, C.P. Hart. 🌈



Sense

/ emotional touch of the surface /



www.ideagroup.it

Leading Trends

THE MATERIAL: WOOD

LOOK TO THE BEAUTY OF NATURAL TIMBER FOR WARMTH AND A SPA-LIKE FEEL



THE TREND EXPLAINED

Thanks to the desire to create a sanctuary at home, the bathroom has become a retreat, a private oasis to help restore mental and physical wellbeing. With this comes a move away from clinical style. Wood is now the material of choice for its natural beauty and warmth; it conjures the quiet luxury of a spa. There are many ways to introduce timber to your scheme, from a simple small stool to a timber-fronted vanity. Wooden baths are reminiscent of Japanese soaking tubs, while the warm, dry air of a naturally scented wood sauna offers the ultimate indulgence.

BC Designs Crea **bath**, £2,940, C.P. Hart



EXPERT DESIGN ADVICE

Yousef Mansuri, director of design, C.P. Hart

Cladding walls in wooden batons brings the spa-like beauty of timber to a bathroom and helps to reduce echo. Wooden baths, such as Ofuro by Bisazza, make a beautiful focal point; they are typically made from timbers with a high oil content for water resistance. Wood accessories can be simple but effective, especially combined with other natural materials, such as an oak shelf with plants in stone pots. For flooring, try wood-effect tiles – the latest options are highly realistic. →

William Garvey Short Wave **basin**, £1,106, C.P. Hart

**“I LIKE TO USE WOOD AS AN ACCENT,
TO FRAME A STONE VANITY UNIT FOR
EXAMPLE, BECAUSE THE WARMTH OF
WOOD MAKES A NATURAL CONTRAST
AGAINST THE COLDNESS OF STONE”**

ANTHONY BEVACQUA, design director, Janine Stone & Co



Bisazza Ofuro **bathtub**, £12,500; Axor One 75 1jet EcoSmart **hand shower**, from £128; 280 2jet **overhead shower**, from £1,280; freestanding curved **bath spout**, from £1,400; Matki teak **decking**, £226, all C.P. Hart



WHITE TULIP
BY STARCK

www.duravit.co.uk

THE DETAIL: TEXTURE

TACTILE FINISHES PLEASE THE SENSES AND INTRODUCE VISUAL STYLE TO A ROOM



THE TREND EXPLAINED

For many years, bathrooms have been all about ultra-practical smooth surfaces in ceramics, brassware and tiles. But increasingly the design has focused less on pure functionality and more on functionality mixed with comfort and style – and the tactile quality of bathroom fittings has moved to the fore. The beauty of a textured finish is not just aesthetic, but also sensual: how does a tap or vanity feel to touch? In many ways, the bathroom is where we are at our most vulnerable, so surfaces that feel pleasing can enhance the cocooning effect. Introducing a textured finish is one way to add a quiet sense of individuality and offers scope for creativity: you might opt for a brushed or matt finish for the brassware contrasted with a gloss basin, highlight the jewel-like quality of an elegant tap by selecting a textured handle, or choose a fluted finish for a vanity unit and echo it in a glass shower door.

Axor Citterio single **basin mixer** 160 with rhombic cut lever in Brushed Black chrome, £650, C.P. Hart



EXPERT DESIGN ADVICE

Rebecca Milnes, designer, C.P. Hart

In brassware, polished, brushed, satin and matt finishes, plus knurled and other textures, can highlight a sculptural shape. Fluted and ribbed finishes feel good to touch, add interest and soften the straight lines of a vanity unit. Ribbed or fluted glass provides privacy in a shower enclosure while allowing light to shine through, and disguises limescale, too. On ceramic and solid surface baths and basins, gloss finishes help to bounce light around the room, while matt can offer a softer look. Textured floor tiles are less slippery – an important practical consideration. You may prefer to create a consistent look with matching textures across the room, mix and match for a layered look and relaxed feel, or select a stand-out piece, such as a freestanding bath in an unusual finish, as a stylish focal point. →

Artelinea Volumi Notte fluted glass basin **vanity unit**, from £3,517, C.P. Hart

THE SHAPE: CURVES

IT'S ALL ABOUT ROUNDED FORMS, WHICH ARE SPACE ENHANCING AND SOFTEN ANY DESIGN



THE TREND EXPLAINED

Curved shapes can transform a bathroom, adding softness to a space notorious for its hard surfaces. Too many strict lines and sharp angles are not conducive to relaxing, nor are they likely to be as easy to live with as contours that can improve the room's sense of flow. Reminiscent of organic forms – a smooth pebble, the bloom of a flower or a full moon – the latest fittings are designed to bring a sense of nature into the bathroom. For maximum impact, the best way to introduce rounded shapes is to use them for the two key focal points – the basin vanity area and the bath. If that's not an option, then curved accessories, from wall lights to mirrors, can soften the scheme. Think beyond the fittings to the architecture, too. Arches above doors and wall recesses and curved walls wrapping around showering spaces are increasingly popular, not least because seamless surfaces, unbroken by angles and lines, boost the sense of space.

Cielo Delfo **basin and top**, £926 a set, C.P. Hart



EXPERT DESIGN ADVICE

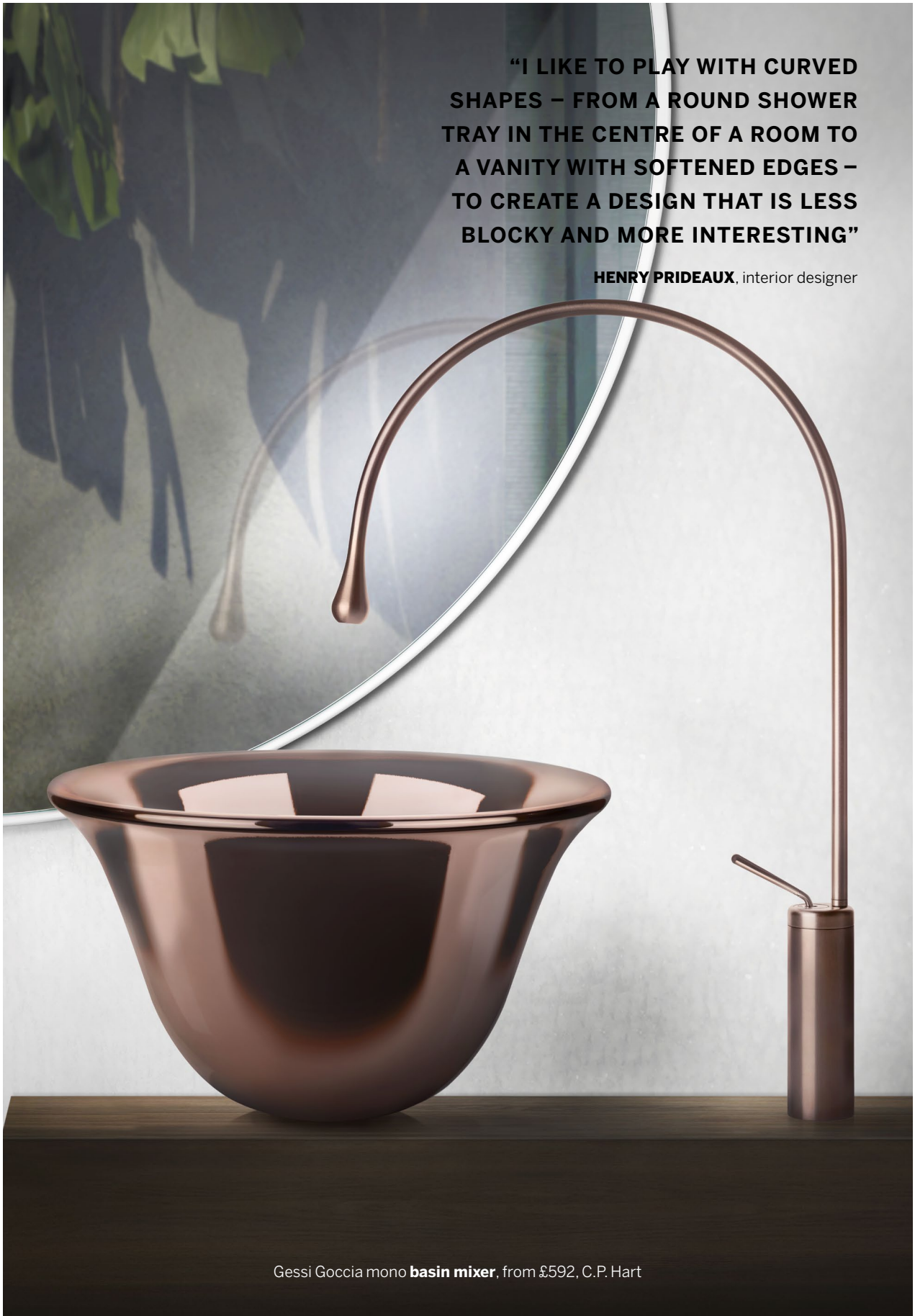
Emma Scott, director of client design, C.P. Hart

To accentuate the curve of a washbowl, wall-hung basin or basin vanity unit, consider an eye-catching colour, pattern or texture. This is an organic style that lends itself to a looser feel. Try mixing finishes to create a warmer, more relaxed space than one where everything must strictly match. Round baths are typically 1,400-1,800mm in diameter, so suit larger rooms. A back-to-wall rounded design, oval option or rectangular bath with softly curved edges may be better for a compact room. Use a seamless water-resistant material, such as polished plaster, microcement or Senso resin surface, to highlight the smooth shape of a contoured wall, ceiling or arch. Mosaic tiles come on mesh sheets, allowing them to be moulded around a recessed shelf with an arched top in a shower or wrapped around a curved wall for a striking result. →

Ex.t Nouveau **bath** in Blush Pink, £10,500, C.P. Hart

"I LIKE TO PLAY WITH CURVED SHAPES – FROM A ROUND SHOWER TRAY IN THE CENTRE OF A ROOM TO A VANITY WITH SOFTENED EDGES – TO CREATE A DESIGN THAT IS LESS BLOCKY AND MORE INTERESTING"

HENRY PRIDEAUX, interior designer



Gessi Goccia mono **basin mixer**, from £592, C.P. Hart

THE FOCUS: SHOWERING

THE SPOTLIGHT IS ON MAXIMISING THE THERAPEUTIC BENEFITS OF WATER



THE TREND EXPLAINED

The move towards showers that offer a personalised experience provides an even greater opportunity to develop your bathroom as a sensual retreat. As manufacturers have invested in shower technology, they are giving us more potential to enjoy the benefits of hydrotherapy at home. You could choose a sports-style directional shower head designed to deliver an invigorating experience and help relieve muscle pain, or a plate-style head with water that falls like soft rain to drench the skin and relax the mind. Waterfall and laminar (hose) streams, strong massage jets and splash-free ultra-fine sprays can all be used to enhance your enjoyment of water.

An increasing number of shower heads offer more than one type of spray, so that you can switch between options according to the way you and your partner or family members like to shower.

Dornbracht Aquamoon Experience **shower**, from £10,999, C.P. Hart



EXPERT DESIGN ADVICE

Yousef Mansuri, director of design, C.P. Hart

Water pressure is a measure of water flow through a pipe and is measured in bars, from about 0.1 bar (low pressure) to 3-5 bar (high). For optimum performance, choose a shower compatible with your system: generally the higher the pressure, the better the shower performance. Most people like to fit a hand shower as well as an overhead option, to be able shower without wetting your hair, or to fit a hand shower on an adjustable riser to offer both. Plate-style overhead showers average 240-300mm in diameter, and go up to 600mm, with similar-sized square and rectangular versions. Buy from a quality manufacturer to achieve an even spray across the head. Luxury shower panels can measure 1,000-1,200mm in length, and need high water pressure to operate effectively. 🚿

Gessi Cono **shower heads**, £1,212 each, C.P. Hart

AXOR

"AXOR ONE IS THE ESSENCE
OF SIMPLICITY – WITH NEW
INTERACTION."



axor-design.com

AXOR ONE
DESIGNED BY BARBER OSGERBY

Meet the Designers

CHARU GANDHI

THE FOUNDER OF INTERIOR DESIGN STUDIO ELICYON ON LUXURY AND WELLNESS

MANY of us want a bathroom to be a sanctuary and, ideally, one that is individual to us. Creating a space that is personal is where luxury begins: it is the chance to have a shower fixed at the perfect height for you, to have the elegant bath of your dreams and every detail as you want it. How joyful is it to have a make-up drawer, sectioned into compartments so that you can store your favourite cosmetics beautifully? When everything has its place, we feel calmer, while considered details will help make the room feel special and unique.

Functionality is critical to the success of the room and underpins its luxuriousness. Without the practical skeleton in place – from plumbing to heating to ventilation – the aesthetics will be diminished. For example, if you want a powerful shower, you may need a pump to generate sufficient water pressure. If your shower head has a high flow rate and you like to take long showers, it is essential to have a drain that can cope with the deluge to prevent overflowing. If you enjoy long soaks in a large, deep bath, you may need to reinforce the floor to bear the weight of the filled tub, and be sure you have a plentiful supply of hot water to fill the bath quickly and replenish it as you bathe and the water cools. Form must marry function for a successful outcome, so always use a qualified installer, experienced in the products selected.

There are two ways I like to approach bathroom design: I might be inspired to continue the adjacent bedroom scheme, or to produce a playful contrast with plenty of drama and impact. We are currently working on a project with an egg-yolk yellow guest bedroom, with a diluted version of the same colour used in the en suite. Here, we have tiled up to the dado rail, with a water-resistant paint above. It is a punchy scheme, designed to give guests a fun

experience, while I might propose softer and calmer colours, such as pale terracotta polished plaster, for a main en suite, which is used much more frequently.

Natural stone, in slab, tile and mosaic forms, is a material we use often. Marble instantly suggests classic elegance and something special, and it can be bookmatched to stunning effect. But I enjoy using many materials and different textures, including polished concrete floors, fluted glass shower doors, huge mirrors concealing recessed storage, timber vanity units, and walls clad in cedar, chosen for its spa-like feel and beautiful aroma.

Good lighting also contributes to the luxurious feel of the space. Lighting on different circuits and dimmers can include low-level LEDs under vanity units to provide a soft glow at night, and in the floor behind a freestanding bath to highlight its shape. If the WC and shower are behind tinted glass doors, their lights can be turned off so they can't be seen while you are bathing in the evening.

QUICK-FIRE QUESTIONS

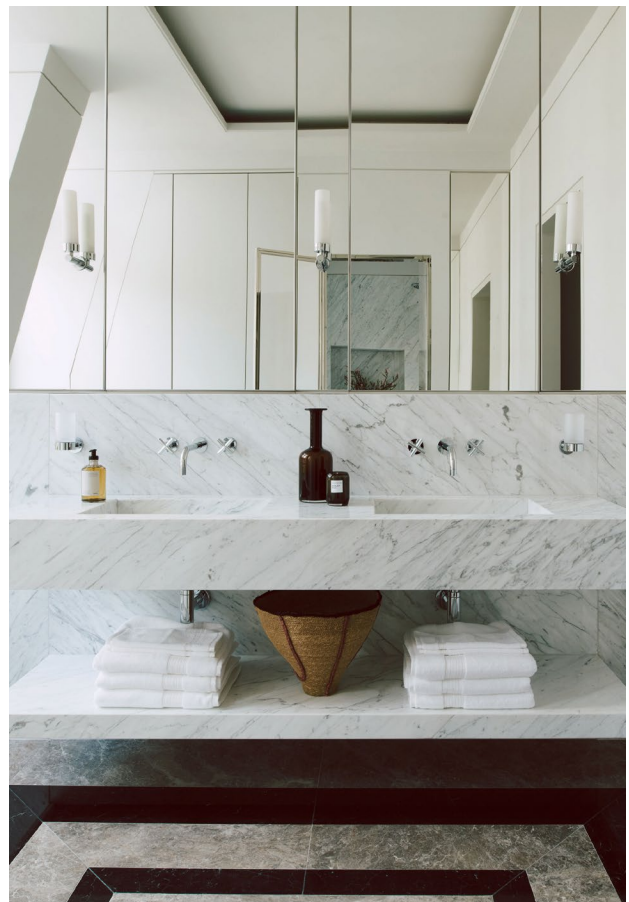
WHAT INSPIRES YOUR

BATHROOM DESIGNS? I love to play with materials and textures to create something unique.

GO-TO BATHROOM SURFACE?

Polished plaster is water-resistant and makes a wonderful, seamless wall covering, introducing softness and a sense of movement to a bathroom.

A PRODUCT YOU LOVE? Brassware by Samuel Heath, because it has impact and is beautifully crafted in Britain. →





WASHLET

**WC with bidet functions –
Where hygiene meets comfort**

WASHLET™ RG and RG Lite

Hygienic, compact, user-friendly

To discover our latest WASHLET™, the RG / RG Lite and further WASHLET™ models,
visit us online, in a C.P. Hart showroom or in our showroom:

TOTO Concept Showroom, 140 St John Street, London EC1V 4UA

TOTO

Life Anew

gb.toto.com

GEORGE BRADLEY & EWALD VAN DER STRAETEN

THE DIRECTORS OF BRADLEY VAN DER STRAETEN TAKE AN ARCHITECTURAL VIEW

As architects, we are passionate about the power of good design on wellbeing. We focus on seven design pillars that are essential considerations for a healthy building, and they apply to bathroom design, too.

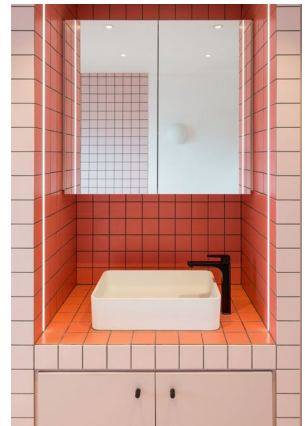
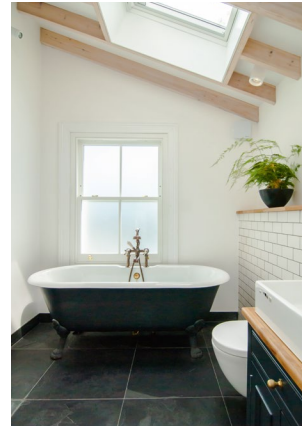
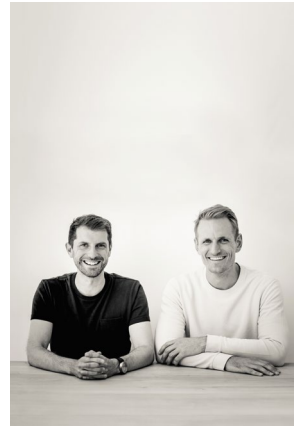
We all need exposure to natural light – it helps us to focus, improves our sleep patterns and can affect our mood. We think first about how to make the most of the available light, perhaps by positioning a bath under the window, so you can also enjoy the view and feel connected to nature. If your bathroom doesn't have windows, can you 'steal' some light from another room, maybe via high-level windows or the roof?

Mirrors and reflective surfaces can be used to bounce light around the room, while light falling onto timber, such as a tall oak cabinet, can add a natural warmth and homely feel. Another way to draw the outside in is to surround the window with timber or a vibrantly coloured tile, which acts like a picture frame.

We work hard to make even the smallest room seem bigger. Being cramped is not a good feeling! Alongside practical considerations, such as plumbing, we try to create a layout that flows. Keep the floor to one level if you can, consider using the same floor tile throughout, and use wall-hung fittings to boost the sense of space.

Bathrooms are echoey, but a mix of textures can help dampen sound. Curved surfaces are great for minimising echoes; avoiding parallel walls helps, too. You may want to install a music system and double glaze the window. Also consider the heating – a warm room is more conducive to relaxation. We favour underfloor heating in bathrooms, as it is usually the best kind for the lowest energy consumption.

Finally, pay attention to air quality by ensuring good ventilation – natural, if possible – or fit an extractor fan. Avoid toxic materials by using environmentally friendly paint, labelled either 'No VOC' or 'Low VOC', or by covering walls in a clay-based plaster, such as those by Clayworks. We like to use natural, sustainable materials where we can, such as oak and bamboo, and stones, such as slate, which have a pleasing tactile quality that is hard to beat.



QUICK-FIRE QUESTIONS

WHAT INSPIRES YOUR

BATHROOM DESIGNS? The thermal baths at Vals in Switzerland by architect Peter Zumthor are an incredible sensory experience.

GO-TO BATHROOM SURFACE? We enjoy elevating something simple to something special. Right now, we are using square plain green ceramic tiles everywhere to create a totally immersive feel.

A PRODUCT YOU LOVE? Kast concrete basins; again, a simple material is made special. →

KAREN HOWES

THE FOUNDER OF TAYLOR HOWES SHARES HOW SHE CREATES A SENSE OF CALM

ONE of the things we realised during lockdown was the importance of having space and time to relax, especially as working from home can make it seem impossible to escape from the screen. More than ever, the bathroom has become the place of calm, somewhere to retreat to in the evening, run a bath, enjoy a glass of wine and unwind.

If you have a large bathroom, then a steam shower, a sauna or even a massage table can be included to create a home spa. But in smaller rooms, the most important wellness feature is a supremely comfortable bath. For every project, I try to insist that clients sit in their chosen bath before purchasing, because everybody has different requirements, though I do find the good old-fashioned cast-iron baths tend to be the most comfortable. They can often be painted in the colour of your choice, which is probably another reason they are making such a comeback.

Creating the right atmosphere is essential, so imagine you are walking into a spa: a beautiful aromatherapy fragrance, your favourite music and adjustable lighting can all help to create a gentle mood and sense of escape. Make sure to include a side table or trolley adjacent to a freestanding bath, or perhaps a recess in the wall, so there is a place for bottles, and complete the experience with deliciously scented bath oils and candles.

I also like to include a spacious shower, so careful layout planning is important. Recently, we have seen people choose to allocate more space to their bathrooms so that they can incorporate all the features they want. To make the room seem less busy, if there is enough space, we will include a separate cubicle for the shower and another for the WC, to create privacy, screened behind fluted glass.

Good water pressure is crucial for a powerful experience from a larger shower head, so check with a plumber to ensure compatibility with your system before you buy. To round off the experience of a hot shower, I like to finish with two invigorating minutes of ice-cold water each morning.

The key to a happy marriage is separate basins! If they are set on a vanity unit, make sure that you

include plenty of storage below, because too much clutter does not make for a calming ambience.

Also consider a wall-hung cabinet above the WC or another solution for storage; I have a divider bookcase to screen the loo in my bathroom.

Luxurious real marble and durable, easy-to-maintain marble-effect porcelain always suggest tranquillity and a connection to nature. I suggest using mosaics on the floor and larger-format tiles in the shower. Brassware in a more muted finish, such as brushed champagne gold or bronze, can add softness to the overall look.

I also like to use wallpaper and fabrics to bring in further softness, especially in quieter designs, such as a wallpaper by Phillip Jeffries called Vinyl Against the Grain. I might cover a stool in faux leather and hang a Roman blind in an elegant fabric. If you are worried about steam damage – although this shouldn't be a problem if the room is well ventilated – there are plenty of outdoor fabrics available. Two that I particularly like are Silky by Perennials and Mustique by Evitavonni. And the finishing touch? A beautiful painting, to be enjoyed from the comfort of the bath.

QUICK-FIRE QUESTIONS

WHAT INSPIRES YOUR

BATHROOM DESIGNS? A visit to the incredible marble yards in Italy has been the starting point for many projects.

GO-TO BATHROOM COLOURS?

Soft, natural and calm colours, such as sage green, pale pinks, subtle greys and lots of taupe shades.

A PRODUCT YOU LOVE? The Winchester freestanding bath, because it is so comfortable – and beautiful in a soft green. →

MEET THE DESIGNERS



MEET THE DESIGNERS

EVA SONAIKE

THE INTERIOR AND TEXTILES DESIGNER ON USING COLOUR WITH CONFIDENCE

WHEN I was growing up in the 1970s, bathrooms were filled with colour and pattern, before times moved on in favour of plain white sanctuaries. But I want us to look at colour and pattern again. They are essential ingredients in bathroom design: they can lift our mood and enhance the experience of downtime.

This is something I believe strongly; I have a Nigerian heritage and colourful expression is part of Yoruba culture. I grew up in Germany, then moved to London, where I studied fashion before setting up my company specialising in African-inspired textiles and wallpaper. We can all benefit from colour, not just for aesthetic reasons, but also for emotional ones: soft blues can make us feel calmer, greens can be fresh and restorative, and pinks and reds can be invigorating.

I recommend starting your bathroom scheme by simply choosing your favourite colour, preferably one that reflects the way you want to feel. Use it as your base and build from it, combining different shades and bringing in other colours and textures. Create a mood board of swatches and images. Be as experimental as you like and trust your instincts: you will quickly be able to see the combinations that speak to you.

The easiest way to introduce splashes of colour and texture is to accessorise with towels, bath mats, baskets and plants that thrive in a humid environment, but I would go further – tiles, walls in bathroom-specific paint, a blind and pouffe in outdoor (water-resistant) fabric. I also love some of the coloured sanitaryware available, such as a pink basin in a dressing area or a colourful bath as a focal point. Together they will help a bathroom feel less clinical and more like a living space.

When it comes to pattern, I like to keep things simple but bold, as this creates a more contemporary look than a busy mix. Pick a genre of pattern and stick to it, combining perhaps two graphic patterns, for example, rather than mixing in a floral as well.

Finally, ensure the bathroom is well lit, making the most of natural light during the day and installing good-quality fixtures for evening. Lights need warm-coloured bulbs that enhance the colours and patterns in the room. Make sure they are dimmable or installed on a choice of circuits so you can adjust the mood.



QUICK-FIRE QUESTIONS

WHAT INSPIRES YOUR

BATHROOM DESIGNS? I often think of Morocco for its uplifting colours, patterned tiles and sense of opulence.

GO-TO BATHROOM COLOURS?

The rejuvenating combination of purple and green.

A PRODUCT YOU LOVE?

The Cielo Delfo vanity unit, for its ribbed texture, green oval countertop and round basin. It is more interesting than something with a strictly linear shape. 📸

Bette: beautiful, durable and sustainable



The BetteLux Oval Silhouette in blue satin

400 colours and recyclable

Bette baths, shower trays and washbasins are available in over 400 colours, including gloss, matt and shimmering options like blue satin. This huge choice is possible because of the way the products are made; from strong and stable titanium-steel, which is then finished in a glass-like enamel glaze. The finish is so durable that it comes with a 30 year warranty, and Bette products are fully recyclable too.



The ellipse-shaped BetteEve bath

Bathing for Two

The latest bath to join Bette's extensive collection is the BetteEve, which brings the ellipse shape into the bathroom. Made from durable glazed titanium-steel. The BetteEve bath comes in three versions: one freestanding and two fitted options. All are a generous 180×100 cm, with symmetrical back rests on both sides and a central waste, making them ideal for two to bathe together.



The BetteAir shower tile transforms the shower floor

Transforming the shower floor

BetteAir is the world's first shower tile made of glazed titanium steel. It completes the evolution of the shower tray into a part of the bathroom floor and has all the advantages of a tile, without any of the disadvantages. BetteAir integrates so perfectly into the floor that it is hardly noticeable, and the floor of the shower is immaculately beautiful, free of joints, hygienic and easy to clean. It is available in eight sizes from 900×900 to 1400×1000 mm and in a choice of 31 colours. It can be equipped with almost invisible anti-slip: either BetteAnti-Slip Pro, or new BetteAnti-Slip Sense for gloss colours, which offers even greater slip resistance.



Glazed
Titanium-Steel



Sustainable
Quality



Made in
Germany

30

Years
Warranty**

**1 Further information
on our guarantee terms
at www.my-bette.com

BETTE

www.my-bette.com

Bespoke Bathrooms



1.



3.



5.



2.



4.

UNDERNEATH the railway viaduct at London's Waterloo lies the country's largest and most impressive bathroom showroom – the flagship home of C.P. Hart. Soaring arches create an atmospheric backdrop to the latest wellness products and trends in bathroom design, including the company's collaborations with renowned designers. Immerse yourself in more than 40 room sets and see an exceptional variety of classic and modern fittings. They include the latest sustainability developments, wellness products and innovations in hygienic surfaces and touch-free products that respond to the changing requirements of our world following the pandemic. C.P. Hart earns its reputation as the UK's first port of call for luxury bathrooms.

Browse the displays or discuss your project with C.P. Hart's team of designers and sales consultants, qualified to provide planning guidance and product selection. Visit Waterloo – or any of the showrooms – at the start of your design journey to touch fittings, see working showers and wellness products, and inspect quality and finishes, something that imagery alone cannot convey. Each showroom is dedicated to challenging perceptions and creating new concepts for those willing to take a fresh look at bathroom design, covering every detail – from baths, basins, spas and showers to heating, lighting and surfaces.

With more than 80 years' experience in luxury bathrooms, C.P. Hart's reputation has been built



1. Axor Nendo showerhead with lamp, £1,950
2. Axor Citterio single-lever basin mixers, from £493 each
3. C.P. Hart Waterloo showroom
4. Ex.t Stand freestanding bath, £6,961
5. Cielo Elle Ovale freestanding basin and vanity unit, POA
6. C.P. Hart Epoch wall-mounted 3-piece basin mixer, £693
7. IdeaGroup DolceVita vanity unit in Rovere Naturale, from £910
8. Camden bath, £4,458
9. JEE-O freestanding bath shower mixer, £2,136

on designing, specifying and sourcing innovative bathroom ranges from international designers and manufacturers, creating bespoke bathrooms for discerning clients. Many of the products are exclusive and cannot be seen or purchased elsewhere, while a dedicated logistics hub in Dartford holds more than £6 million-worth of stock, ready for delivery.

The Design Service guides customers through the renovation process, from initial planning to 2D or 3D CAD floor plans and elevations. Central to this service is C.P. Hart's creative team of professionally qualified designers, who will create a tailored design for each client, whether it's for a cloakroom or a grand-scale pampering retreat. Given that installing

a bathroom is one of the more technical home projects, the in-house Technical & After Sales team ensures expert advice and support is readily available. To complete your bathroom, C.P. Hart is pleased to recommend its Approved Installer Service to introduce clients to installation experts, so that beautiful design, exceptional products and quality of fit can be assured.

To book an appointment at any showroom and to download a brochure, visit cphart.co.uk

C.P. HART

Case Studies

PRETTY IN PINK

DISCOVER THE SECRETS TO CREATING THIS LUXURIOUS HAVEN OF CALM

1 As part of the renovation of a listed Tudor manor house in Norfolk, Danielle Marsh and Emily Holder of Wells and Maguire converted a gloomy guest room into a spacious en suite for the main bedroom. 'We knocked through the wall, added glazed doors, and restored the original floorboards and painted them white,' says Danielle. 'Instantly the space felt lighter and brighter.'

2 Asked to create a tranquil retreat for the owners, who have five children, Danielle and Emily specified a luxurious bath, set in the middle of the room as the focal point. 'It is also centred on the window to give the best view of the trees.' An adjacent small table provides a handy surface for bath oils.

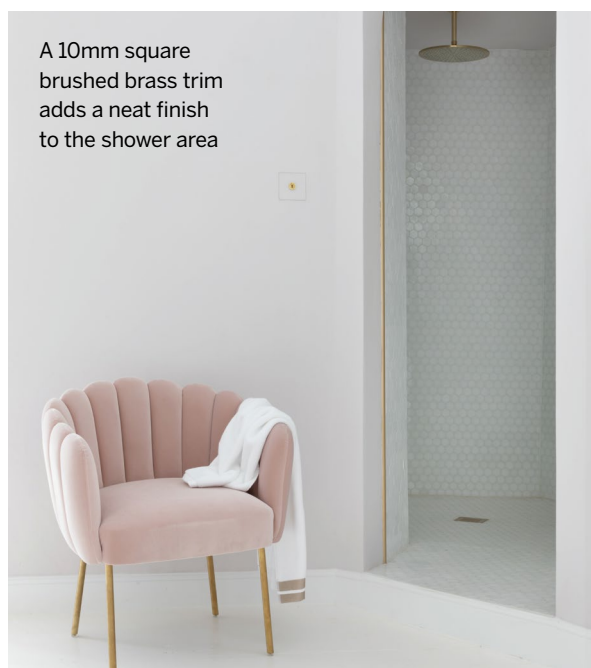
3 Pretty, pink herringbone wall tiles zone the basin area, with the white washbasins and vanity unit chosen to match the bath. 'White is clean and fresh, while pink adds subtle colour, with its warmth echoed in the brushed brass taps and details.' The symmetrical arrangement of the washbasins and wall mirrors enhances the elegant feel of the space, while three wall lights balance the look.

4 An original turret has been cleverly converted into a corner walk-in shower, clad in iridescent mosaics, with soft lighting built into both the ceiling and a wall niche. The large overhead shower, in a brushed brass finish, delivers an invigorating spray.

5 A dramatic crystal chandelier hangs above the bath, accentuating its role as the key feature of the room. Practical ceiling spotlights are fitted on a separate circuit, as are the wall lights above the basin and spots in the shower. 'This space is flooded with natural light during the day, and provides a haven of relaxation when softly lit at night,' Danielle says. →



Made of smooth white composite stone, the Coniston bath provides a deep, comfy soak



A 10mm square brushed brass trim adds a neat finish to the shower area

KEY PRODUCTS

FITTINGS

Coniston **bath**, £4,588;
Duravit Luv **double vanity**,
£5,288; Cielo Shui Comfort
Oval **basins**, £589 each;
Crosswater brushed brass
MPRO **basin mixers**, £249
each; floorstanding **bath
shower mixer**, £999;
showerhead and arm, £318,
all C.P. Hart. Everdon tall
mirrors, from £474 each,
Porter. Simple **wall lights**,
£156 each; Pearl silk semi
cylinder **shades**, from £180
each, both Porta Romana.
Clear Crystal **chandelier**,
from £2,642, Tigermoth
Lighting. Daisy **chair**, £942,
Liang & Emil

SURFACES

Similar **wall tiles**, Renna
Rosa, £121sq m, C.P. Hart.
Botella Carapace Frost glass
mosaic tiles, £247.75sq m,
Topps Tiles. **Walls in** Manna
Ash matt emulsion, £45 for
2.5ltr, Fired Earth



The Luv vanity with
twin washbasins offers
timeless elegance in
a minimalist style

CONFIDENCE TRICK

CLEVER CONTRASTS ARE KEY TO THIS STRIKING YET RELAXING SCHEME

1 Asked to create a luxurious en suite for the main bedroom of an early Victorian house, C.P. Hart designer Stefania Marino was inspired by her clients' choice of tile. 'They brought me an image of an eye-catching black and white hexagonal design. It sparked the idea for a bold monochrome scheme, which would also make the most of the original black cast-iron fireplace,' she recalls of the project in south London.

2 With a bath in the centre of the space, no shower, and a vanity unit and WC tucked into one corner, Stefania was asked to rethink the layout to include a shower in the room. Moving the entrance door allowed her to position a large 1,500x900mm enclosure in its place, with a Crittall-style matt black frame chosen to introduce industrial style. A niche provides a shelf for shampoos, and a wall-mounted multifunction showerhead offers rainfall spray and waterfall cascade for spa-like luxury.

3 'To soften the scheme, the freestanding composite stone bath has a gently curved shape,' says Stefania, who placed it in front of the floor-to-ceiling windows: 'I wanted my clients to be able to lie back and see the green of the garden, and the sky.' It is set on hexagonal marble-effect tiles, chosen for their subtle interest and used throughout, including on the shower floor, to boost the sense of space.

4 A bespoke double basin vanity unit, designed by Stefania, is positioned centrally along the wall opposite the shower and bath. It is topped in Statuario Bianco marble for elegance and to temper the drama of the splashback tiles, above plenty of storage in painted cupboards below. Rectangular pendant lights hang in front of a large wall mirror, their black finish echoing that of the shower enclosure and towel warmers.

5 'The taps and shower fittings are finished in polished chrome to balance the matt black elements in the scheme,' says Stefania of the Italian-designed Gessi Eleganza range. 'I wanted to contrast the modern industrial look with a little glamour and elegance to make the room unique.' →



The bespoke vanity unit is hung on a stud wall, which disguises pipework



The wall and floor tiles are linked by their hexagonal shape

PHOTOGRAPHS ANNA STATHAKI



KEY PRODUCTS

FITTINGS

Elter **bath**, £4,093; Gessi Eleganza floorstanding **bath shower mixer**, £2,105; wall mounted **basin mixers**, £804 each; Gessi Tondo 300 **shower system**, £2,012; Drench **shower enclosure**, £4,888; Bisque Deline **towel warmers**, from £797 each; Astro Homefield **pendants**, £180 each, all C.P. Hart

SURFACES

Nova Graphite hexagonal **tiles**, £68.97sq m, Ca' Pietra. Maté hexagonal **tiles**, £242sq m, C.P. Hart

A modern take on a classic slipper bath, the Elter tub has a fluid, sweeping silhouette

SERENE SANCTUARY

HOW BLAND BECAME BEAUTIFUL IN THIS EXQUISITE EN-SUITE RETREAT

1 Having sold her restaurant and cookery school businesses, moved house and set up a new home fragrance brand, all in a matter of weeks, Angela Herbert was keen to create a relaxing retreat in her new home in East Sussex. 'I've always wanted a really special, feminine bathroom, so the moment I picked up the keys from the estate agent in Tunbridge Wells, I went across the road to the C.P. Hart showroom and had a chat,' she says.

2 The director of design, Yousef Mansuri, took up the challenge of creating the new room. 'The existing small en suite occupied one corner of a big bedroom, with an empty space in the centre,' he says. 'It made better sense to replace it with a new en suite created by building a stud wall across the width of one-third of the bedroom, producing a much more generously sized sanctuary-style space.'

3 Seen from the bed, grand antique French double doors – a find of Angela's – open on to the new en suite with a freestanding bath as the focal point. Painted in a soft pink for a classically feminine look, the double-ended design allows Angela to lie in whichever direction she chooses, able to gaze out of the windows at both ends of the room.

4 Beyond the bath is a double-entry shower, its walls clad in eye-catching marble-effect tiles, with grey and gold veins that blend with the natural wood-look of the floor and balance the pinkness of the bath and wall. The shower screen is framed in black: 'We wanted to bring in contrast,' explains Yousef, who also suggested brassware and twin towel warmers in a contemporary matt black finish to accentuate the statement look.

5 Tucked behind the entrance door is a double vanity unit with a large drawer and twin side cupboards. 'I wanted to have plenty of storage in this area and I love the curved shape of this piece, something that is also picked up in the round wash bowls,' says Angela. 'The combination of the dusty pink bowls with the black taps is striking and perfectly blends femininity with a bold look.' →



Smart matt black wall-mounted taps contrast with soft pink wash bowls



With bespoke wardrobes fitted on both sides of the shower, this room is also used for dressing

PHOTOGRAPHS ANNA STATHAKI INSTALLATION DESIGNER INSTALLATIONS STYLING ZENA JANE INTERIORS

KEY PRODUCTS

FITTINGS

BC Designs boat **bath** in Farrow & Ball Sulking Room Pink, £1,584; MPRO floorstanding **bath shower mixer**, £1,092; wall-mounted **basin mixers**, £414 each; Vos **showerhead**, £376; Drench Border **screen**, £1,137; Artelinea Incanto **vanity unit**, £4,952; Cielo Era **wash bowls**, £723 each; Solstice lighted **mirrors**, £342 each; Vogue Chube **towel rails**, £326 each, all C.P. Hart

SURFACES

Walls in Setting Plaster modern emulsion, £53 for 2.5ltr, Farrow & Ball. Norway Micro Greige **floor tiles**, £57.11sq m; Bistrot Calacatta Michelangelo **wall tiles**, £47.18sq m, both C.P. Hart

Double doors open on to the pink bath, positioned in front of a symmetrical double-entry shower

GLAMOUR REDEFINED

ART DECO DETAILS ARE AT THE HEART OF THIS STUNNING UPDATED DESIGN

1 For some time, Nick Rylance and Fermín García-Roméu had been mulling over how to extend into the loft of their three-bedroom house, built in 1925 in north London, before coming to a decision. 'We realised we really didn't need more rooms, but what we did want was a better bathroom with a walk-in shower,' recalls Nick. 'We had a small bathroom with a shower above the bath and a WC, and another loo in a small room on the other side of the wall.' On a visit to C.P. Hart's showroom, they met director of design Yousef Mansuri, who drew up plans for one large bathroom created by demolishing the dividing wall.

2 'We love the original art deco features of the house and were keen to echo the style in the design of the room and to make more of the original diamond-shaped window,' says Nick. To achieve this, the striking freestanding cast-iron bath was placed as the key focal point below the window, framed by art deco-inspired fluted glass wall lights.

3 Where the extra WC once stood is a generous walk-in shower, screened by simple glass panels framed in black inspired by 1930s Crittall windows. So as not to detract from another deco-themed feature – the black and white chequerboard tiled floor – the tiles run into the shower area, with the entire floor tanked using a modular wet-floor system, finished with a discreet drain.

4 Named after London's art deco masterpiece, Claridge's hotel, the basin vanity unit adds more period style, as does the classic brassware with black lever handles. 'Yousef made it very easy,' says Nick, 'showing us visualisations on screen that gave us a clear sense of how the room would look, so we knew the design would come together well.'

5 To contrast with the floor, Fermín, who grew up by the sea in Spain, chose azure-blue glazed wall tiles to remind him of the ocean; they are finished with a polished black trim for definition. 'This is a wonderful room in which to relax,' says Nick, 'and feels utterly in keeping with the style of the house.' 📸



The curved vanity unit ensures there are no hard corners to knock on entering the room



Contrasting wall and floor tiles create a sense of cohesion throughout the space

The original diamond-shaped window and the silver bath form an impressive focal point



KEY PRODUCTS

FITTINGS

Camden **bath**, painted on site, £4,659; Samuel Heath Style Moderne floorstanding **bath shower mixer**, £3,888; deck mounted **basin mixer**, £1,272; **hand shower**, £480; **overhead shower**, £780; Claridge **basin vanity unit** in Wenge, £2,482; Portofino **soap dishes**, £158 each; **toilet roll holder**, £138; London **WC** with black seat, £1,467; Astro io 420 **wall lights**, £355 each; JIS Rye leaning heated **towel rail**, £702, all C.P. Hart

SURFACES

Colori Matt Black/White **floor tiles**, £37.92sq m; Farrow **wall tiles** in Black and Turquoise, £77.29sq m, both C.P. Hart



C.P. HART

CPHART.CO.UK 0345 8731121

SHOWROOMS

- AMERSHAM ■ BATTLE – NEW SHOWROOM ■ CHELSEA ■ CHISWICK
- DARTFORD STUDIO ■ FULHAM ■ GUILDFORD ■ MUSWELL HILL ■ NOTTING HILL
- PRIMROSE HILL ■ ST ALBANS ■ TUNBRIDGE WELLS ■ WATERLOO, FLAGSHIP
- WILMSLOW – NEW SHOWROOM ■ WIMBLEDON VILLAGE – NEW SHOWROOM ■ WINDSOR